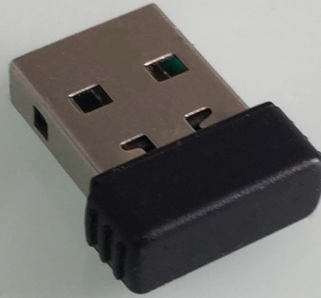
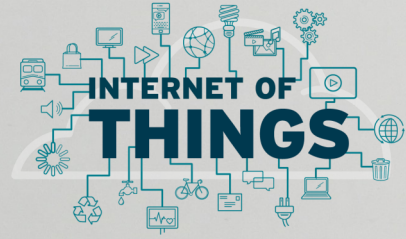




**Smart  
Sensor  
Devices**



## SSD005 Bluetooth® Smart USB Dongle

The SSD005 Bluetooth Low Energy Dongle is a fully integrated solution, providing MCU and Bluetooth radio in one chip, based on Dialog Semiconductor latest Bluetooth chip DA14681.

Flash based device permits field or boot upgradable while application is stored on FLASH memory. Custom settings can also be stored on FLASH memory or OTP for higher integrity.

### Security

The device is suitable for secure Identity and payment applications.

Cryptographic engine with an Elliptic Curve Controller (ECC), AES-256, SHA-1, SHA-256, SHA-512 and True Random Number Generator.

### Certifications

CE Marking, Complies with Radio Equipment Directive 2014/53/EU and US FCC certifications. Complies with Restriction of Hazardous Substances (RoHS) Directive (Directive 2011/65/EU) ("ROHS2") and REACH.

### User Services and Profiles

The USB Dongle can be customized with proprietary profile or service at delivery.

### Software and Tools

The DA14681 is supported by Dialog SmartSnippets Studio, a royalty-free software development platform, which contains:

- SmartSnippets Toolbox: A tool suite covering all software developer needs, including power profiling, FLASH or OTP programming and testing
- SmartSnippets IDE: An Eclipse CDT based IDE pre-configured plugins allowing easy out of the box set-up of the build/debug environment.
- SmartSnippets DA1468x Software Development Kit and Documentation

For more info contact [www.smartsensordevices.com](http://www.smartsensordevices.com)

# SSD005 Product Specifications

	SSD005/3
<b>ROLES</b>	Bluetooth Central & Peripheral. USB Device.
<b>SECURITY</b>	Cryptographic engine with ECC, AES-256, SHA-1, SHA-256, SHA-512 and True Random Number Generator.
<b>CONNECTIVITY</b>	Bluetooth 4.2 USB Full Speed
<b>POWER</b>	USB +5V
<b>Chip</b>	DA14681
<b>Memory</b>	FLASH 8Mbit & OTP 64kB
<b>MECHANICAL</b>	19.2 mm (L) 16.3 mm (W), 6.2 mm (D)
<b>ENVIRONMENTAL</b>	Temperature: -20 to +65 C
<b>CASE MATERIAL</b>	PBT + 20% glass fiber
<b>CERTIFICATION</b>	FCC & CE
<b>COLORS</b>	White/Black

**Notes:**

The device can be programmed with user specific application before delivery.

The device can be provided with proprietary logotype.



**Smart  
Sensor  
Devices**

For more info contact [www.smartsensordevices.com](http://www.smartsensordevices.com)